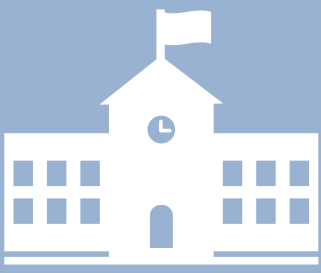


SCHOOL PSYCHOLOGISTS AS MENTAL HEALTH PROVIDERS



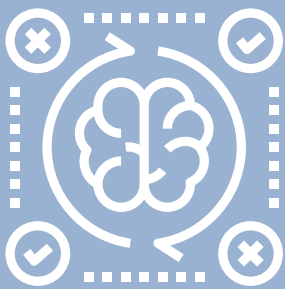
School Systems

- Design, implement, and monitor school wide behavior support programs
- Oversee school wide wellness programs
- Consultation and collaboration to increase staff's knowledge of trauma-informed practices
- Develop and oversee District Wide Crisis Response Teams
- Design and provide Social Emotional Learning curriculum
- Assess and monitor effectiveness of a school's Tiered system of support



Educational Law

- Educate school staff on legal requirements to support students with mental health struggles
- Ensure students are receiving appropriate levels of service as necessary to benefit from their education
- Knowledge in FERPA and IDEIA
- Conduct legally compliant psychoeducational and ERMHS assessments
- Apply education code to psychoeducational and ERMHS reports



Assessment

- Determine need for ERMHS
- Knowledge of intricacies in special education eligibility with regard to mental health symptomology
- Utilize assessment measures to determine goals to be addressed in counseling
- Conduct risk and threat assessment
- Monitoring counseling goals
- Creation of behavior intervention plans
- Knowledge of whole-child strengths and challenges



Counseling

- Provide evidenced-based approaches to individual and group counseling
- Monitor progress and effectiveness of treatments provided to students
- Overseeing site-based mental health programs
- Consulting with school staff regarding ways to support the mental health needs of individual students
- Home-school collaboration for students with mental health difficulties



Training

- Trained in individual and group counseling within the school system
- Trained in cross cultural factors impacting student wellness
- Field-work experience providing short and long term counseling to students
- Trained to provide counseling to individuals ages 3-22
- Trained in therapeutic models
- Tiered systems of support and mental health preventative practices
- Trained in crises prevention, intervention, and post-vention

NATIONAL RECOMMENDED RATIO

1 SCHOOL PSYCHOLOGIST TO 500-700
GENERAL EDUCATION STUDENTS